



 **ARNOWA**  
 Smart | Efficient | Effective

# Arnowa Analytics Platform

## AIOT Management Simplified

[www.arnowa.com](http://www.arnowa.com)

# Introduction

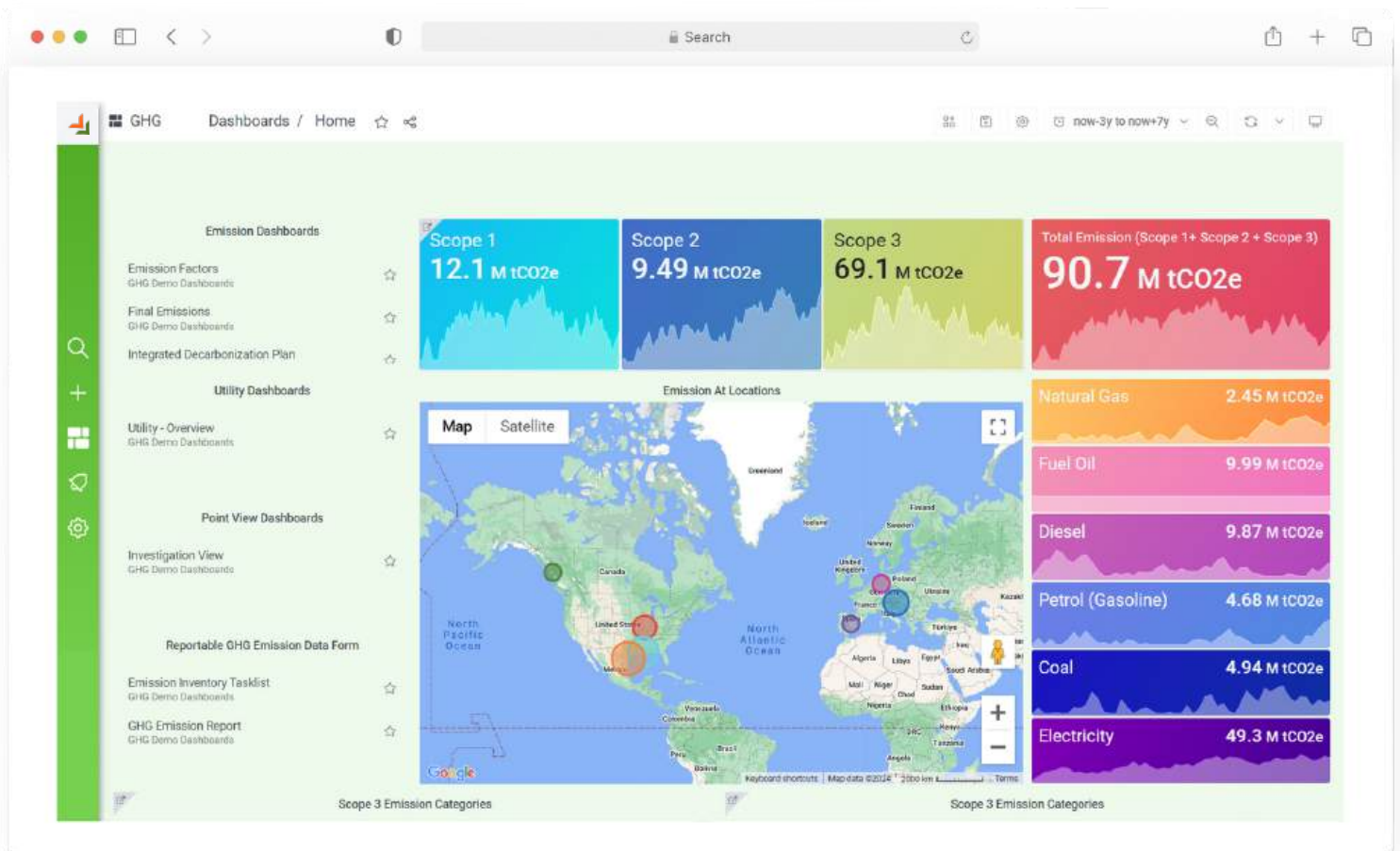
Pressure from customers, investors and communities are driving the need for more detailed Climate-Related Disclosures and proactive Sustainability Transformation measures. As awareness of climate action grows across Australia, local regulatory bodies have increasingly enforced requirements for comprehensive disclosures.

This means adapting to evolving regulations and standards that directly impact your operations. Ensuring data integrity and efficiently managing diverse data sources is crucial. Leveraging technology has become essential to effectively navigate the sustainability journey unique to your organisation.

Arnova's Analytics Platform empowers users to seamlessly integrate sustainability initiatives with core business operations, enabling you not only meet stakeholder expectations with confidence but comply with local regulations.

## A One-Stop Platform for your Sustainability Journey

The Arnova Analytics Platform is a cloud-based solution crafted to expertly guide organisations through every stage of their sustainability journey. From comprehensive disclosures and greenhouse gas accounting to in-depth value chain assessments, our platform integrates decades of emissions management and decarbonisation expertise with advanced AI-driven technology. This unique combination ensures efficient data management, a superior user experience, and steadfast support in achieving your long-term Climate Action and Sustainability goals.



# Key Features

## Greenhouse Gas (GHG) Inventorisation

- **GHG Protocol Compliance:**  
Complies with the GHG Protocol for emissions inventory
- **Comprehensive Data Collection:**  
Collects data across the value chain for Scope 1, 2, and 3 emissions calculations
- **Latest Emission Factors:**  
Utilises emission factors from official sources (e.g.: CER) with customisation options
- **Emission Hotspots Tracking:**  
Monitors emission hotspots and tracks targets
- **Seamless Data Usage:**  
Facilitates the use of GHG emissions data for various reports

## Disclosures and Reporting

- **Comprehensive Reporting Frameworks:**  
Supports disclosures across major sustainability reporting frameworks and rating systems, including NGERs, GRI, CSRD, ISSB, TCFD, BRSR, DJSI, CDP, and MSCI (to name a few)
- **Structured Reports:**  
Downloads and automates sharing of “ready-to-file”, structured reports in customisable formats
- **Auto-Mapping Capabilities:**  
Ensures that data captured is used for multiple reporting and rating requirements
- **Performance Analysis:**  
Provides comparative performance analysis through customisable dashboards

## Value Chain Assessment

- **Gap Analysis:**  
Identifies gaps and aligns organisational targets with value chain partners
- **Streamlined Data Collection:**  
Integrates seamlessly across the entire supplier network, simplifying data collection and analysis, ensuring accurate insights for streamlined sustainability management and regulatory compliance
- **Performance Assessment:**  
Evaluates the sustainability performance of the entire value chain
- **Scorecards and Reports:**  
Generates reports for value chain partners with scorecards and improvement suggestions



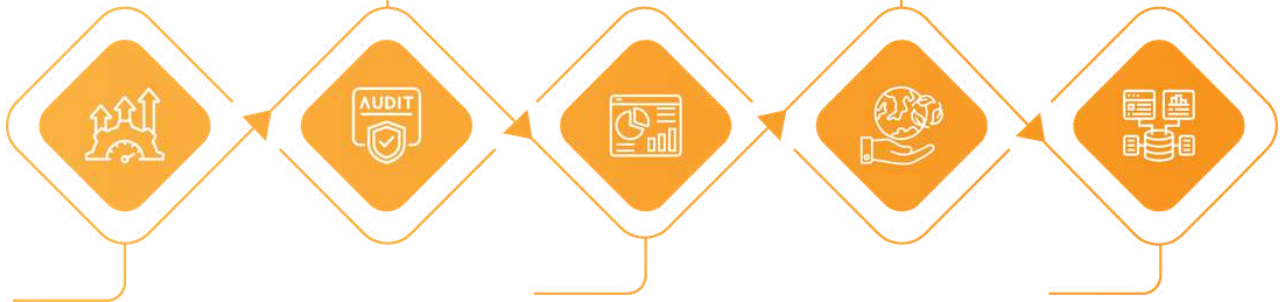
# Key Benefits

## Transparency and Auditability:

Simplifies auditable data trails, reporting requirements, and engages stakeholders with workflows to ensure streamlined data availability and its integrity

## Comprehensive Reporting Solutions:

User-friendly modules address reporting requirements across multiple sectors and geographies



## Efficiency and Productivity:

Features like auto-mapping, machine learning, data automation, and a report builder streamline deliverables for optimal stakeholder communication

## Secure Platform with Multi-User Access:

Allows open or restricted access to data functions and layers based on user-type

## Data Automation:

Eliminates duplication and ensures a single source of truth by connecting existing data sources like ERPs to the Analytics Platform



# Advanced Analytics & Customisable Visualisations

**Sophisticated Analytics Tools:**  
Compute and build custom mathematical functions for tailored visualisations and in-depth analytics

**Dynamic Visualisation Options:**  
Multi-variable, easy-to-understand data visualisations with customisable charts and tables

**Real-Time Monitoring:**  
Real-time data updates with intuitive graphical displays, accessible from any web-enabled device

**Cutting-Edge Tech Utilisation:**  
Utilise Smart Technologies to effectively plan, track, improve, and achieve Net Zero goals

**Historical Data Access:**  
Provide historical data entry and user-downloadable raw data and infographics via an accessible web dashboard

**Dynamic Emission Factors:**  
Incorporate dynamic emission factor values for flexible data analysis and presentation.

**Customisable Dashboards:**  
Over 30 preconfigured energy dashboards/views provided at handover, with no-code customisation at your fingertips

**AI & Augmented Analytics:**  
Utilise Artificial Analytics and augmented analytics to find potential efficiency opportunities and predict anomalies before they occur



# Efficient Data Access & Management



## Data Export Capability:

Export data for reporting and recording purposes in required format



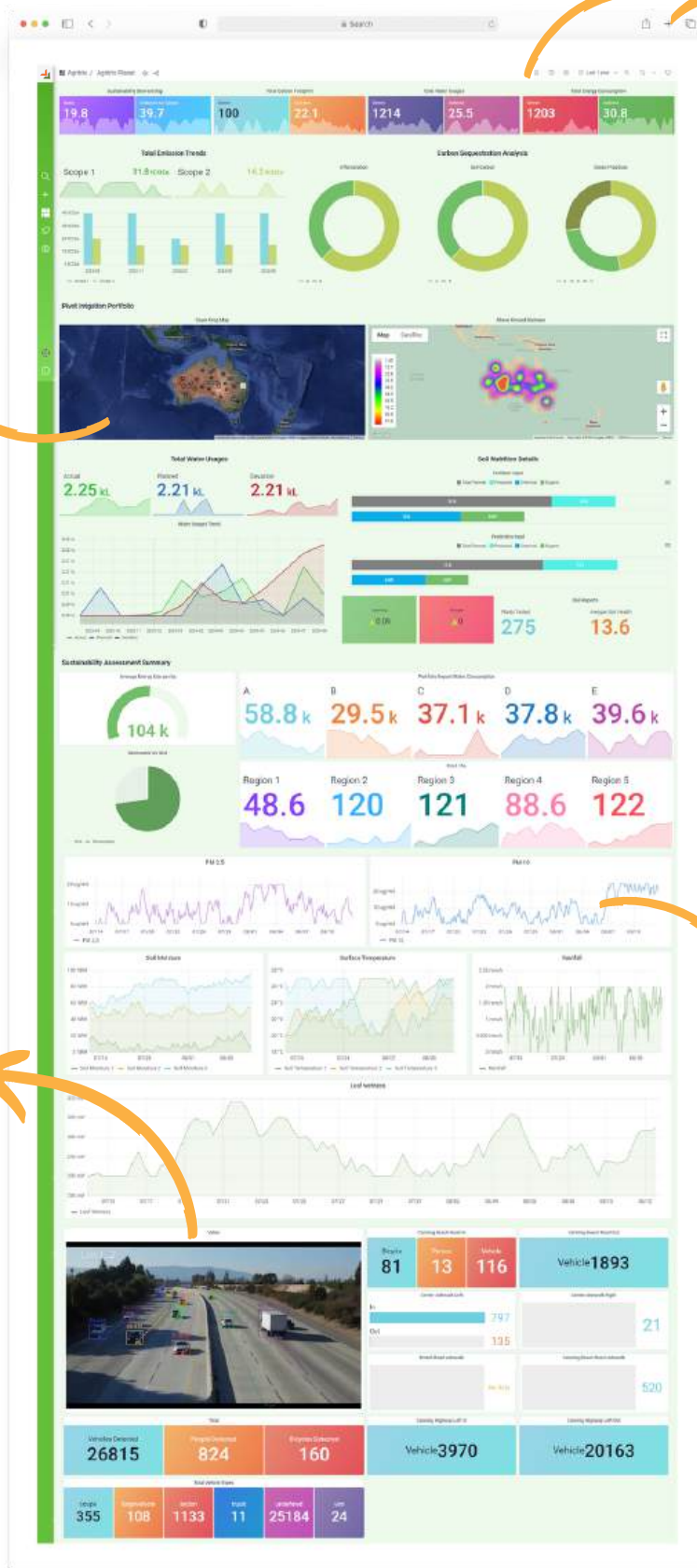
## Customisable Data Intervals:

Customise data interval settings for precise control over data analysis periods



## Public Data Sharing:

Generate static URLs for graphs or dashboards for public viewing, with options for public data downloads and embedding in other websites or presentations



## Web-Based Monitoring:

Access, download, and monitor data via browsers without the need of a specific desktop or mobile application



## Multiple Site Access:

Access multiple sites and datasets in real-time via a single platform with multi-user logins



## Comprehensive Emissions Tracking:

Leverage existing and Industry 4.0 digital technologies to accurately identify and classify Scope 1, 2, and 3 emissions, ensuring robust and precise sustainability reporting

# Seamless Data Integration & Automated Collection

## Versatile Data Collection:

Automatically gather data from IoT devices, business systems, manual entry, utility account platforms, logs, CSV files, third-party sources and PDFs.

## Multi-Parametric Integration & Analysis:

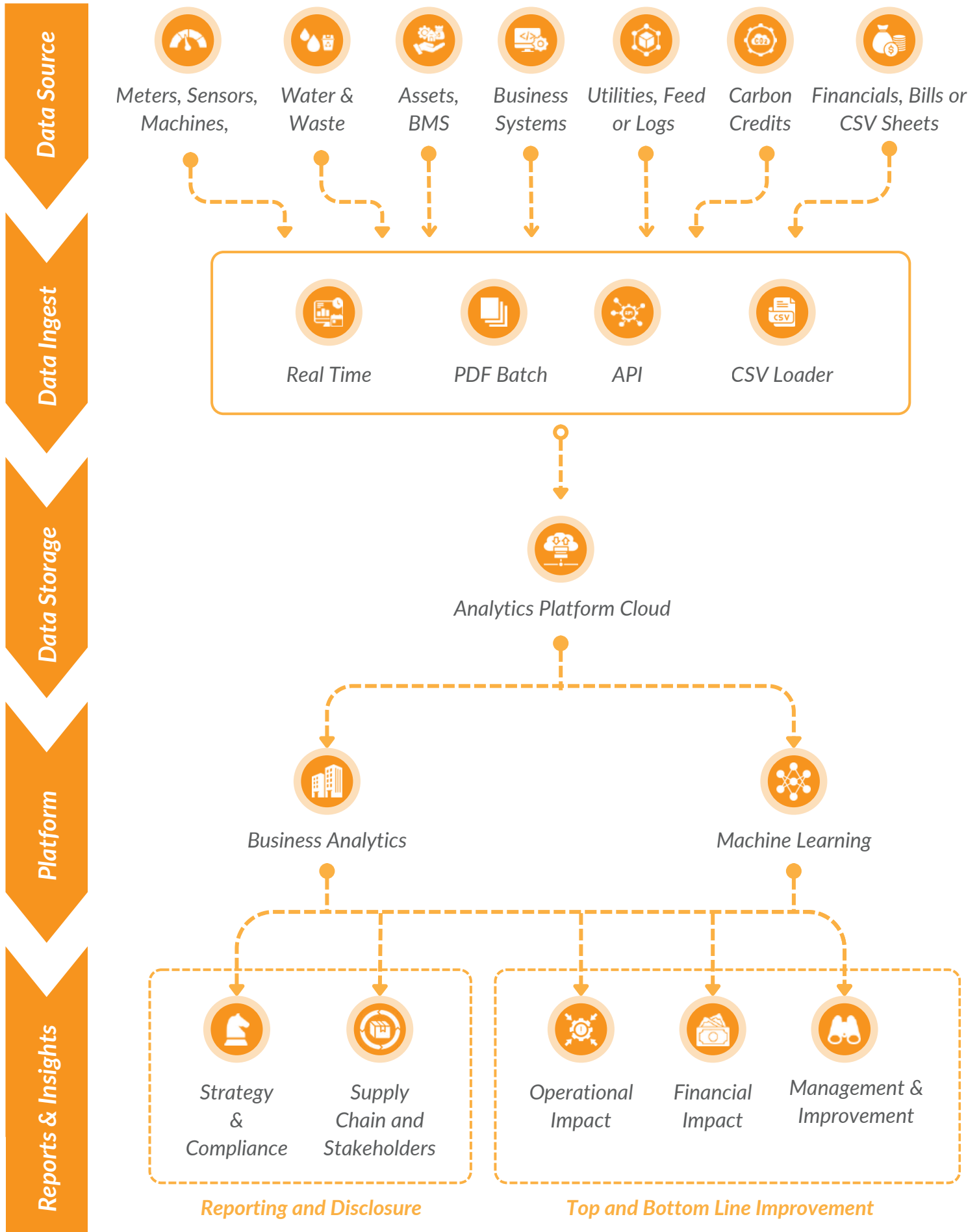
Integration of data from varied sources and multiparametric correlation analysis for actionable insights

## Alerting and Alarming:

Multi-conditional alerts for proactive approach, rapid response and effective management of critical issues.



# Platform Data Framework



# Drive Organisational & Cultural Change with Arnowa

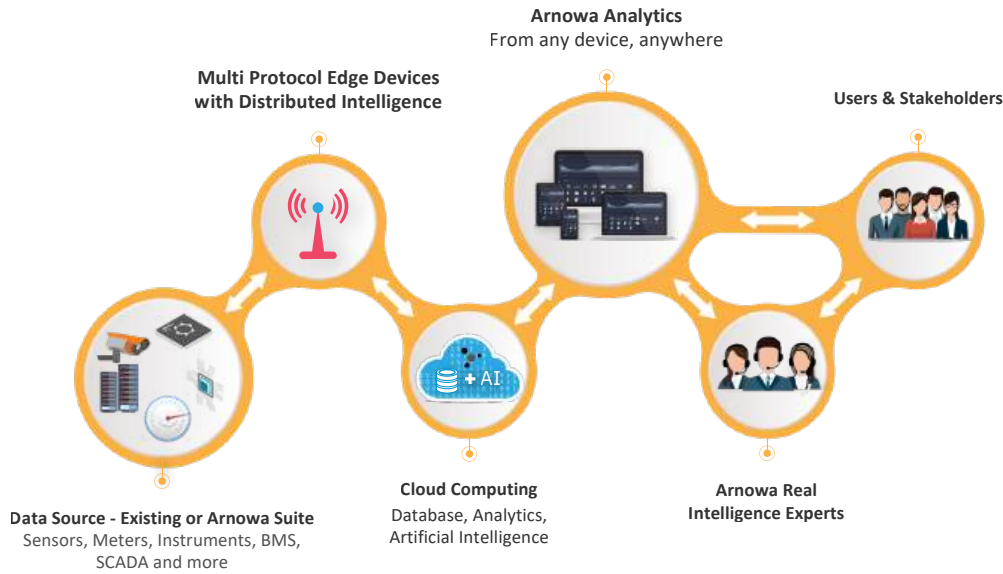


## Why Choose the Arnowa Analytics Platform?



Leverage Arnowa's Analytics Platform to simplify organisational sustainability reporting and performance, ensuring compliance and fostering true long-term sustainability

# Arnowa Eco-System



## Our Valued Clients



## Contact Us

✉ [contact@arnowa.com](mailto:contact@arnowa.com)

🌐 [www.arnowa.com](http://www.arnowa.com)

### 📍 Australia

1/24 Poletti Rd Cockburn  
Central WA 6164, Australia  
Ph: +61 8 64677144

### 📍 USA

884 Sea Island Ln, Foster City,  
California,  
Ph: +1 415 658 9958

### 📍 UAE

A2 IFZA Business Park,  
Dubai Silicon Oasis, Dubai

### 📍 New Zealand

60A Olsen Avenue,  
Hillsborough, Auckland,  
Ph: +64 27 4444 7859

### 📍 Indonesia

Rukan Permata Senayan,  
Blok A-29, Jl. Tentara Pelajar  
Kebayoran Lama - Jakarta Selatan,  
Ph: +62 21 5794 0651

### 📍 India

179/36, 12th B-Main Road  
75th E-Cross 6th Block  
Rajaji Nagar, Bangalore,  
Ph: +91 93504 00005